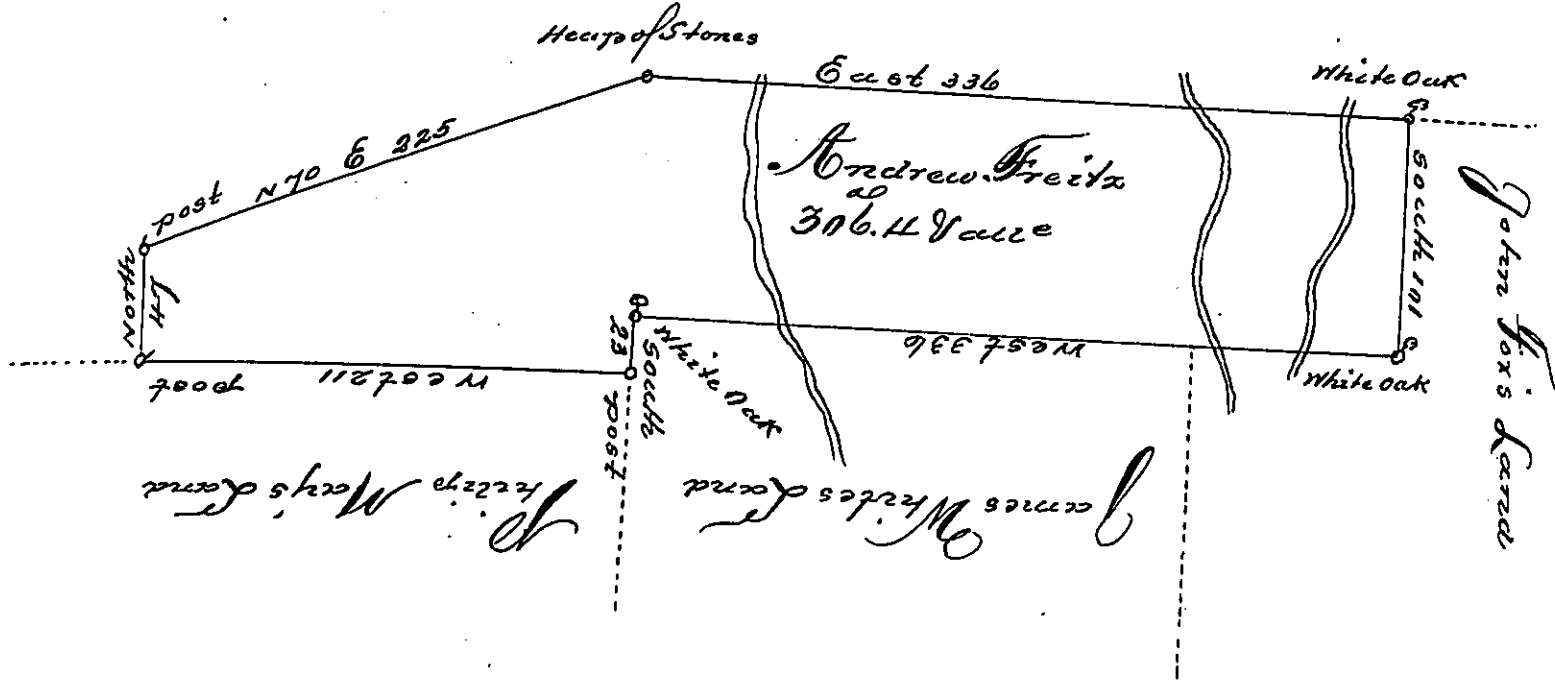


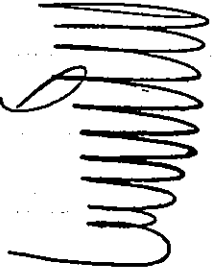
By the Mountain



The Draught of a Tract of Land called ~~the~~ Situated in Penno Valley
 Northumberland County, Containing Three Hundred & six acres and sixty-eight
 perches with the usual allowance of six acres for Roads &c. Surveyed
 the 18th day of June 1774 in pursuance of a Warrant from the Honorable
 the Proprietaries to Andrew Freitz, Bearing date at Philad^a the
 6th day of January Anno Domini 1773.

Wm MacLay

T. John Lukens Esq
 S. Secy. of Pennsylvania



IN TESTIMONY that the above is a copy of the original remaining on file in
 the Department of Internal Affairs of Pennsylvania, made
 conformably to an Act of Assembly approved the 16th day of
 February, 1833, I have hereunto set my Hand and caused
 the Seal of said Department to be affixed at Harrisburg,
 this third day of October, 1899

James W. Potts
 Secretary of Internal Affairs.